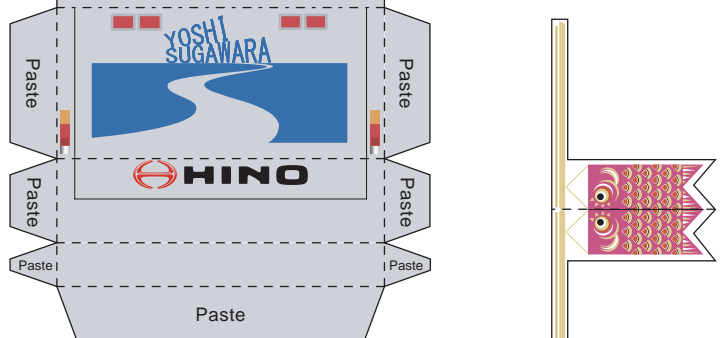


HINO TEAM SUGAWARA Dakar 2010 Paper Craft



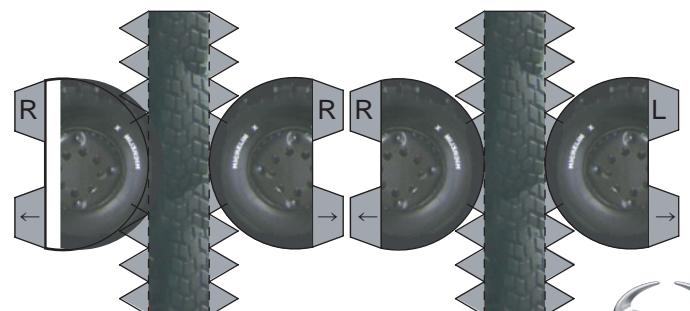
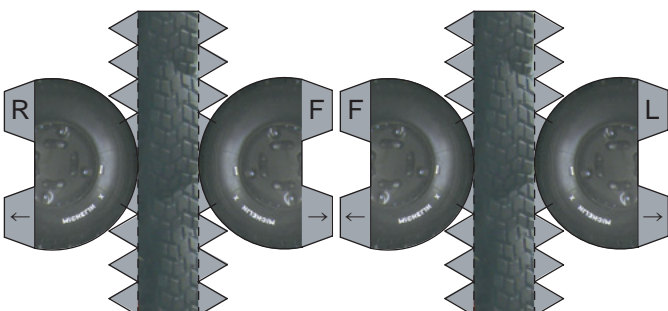
- Terminology:
- - - - - Fold along these lines so the printed surface should be on the folded shape.
 - - - - - Fold along these lines so that the printed surface should be on the inside of the folded shape.
 - Cut along these lines
 - Make slits along these lines



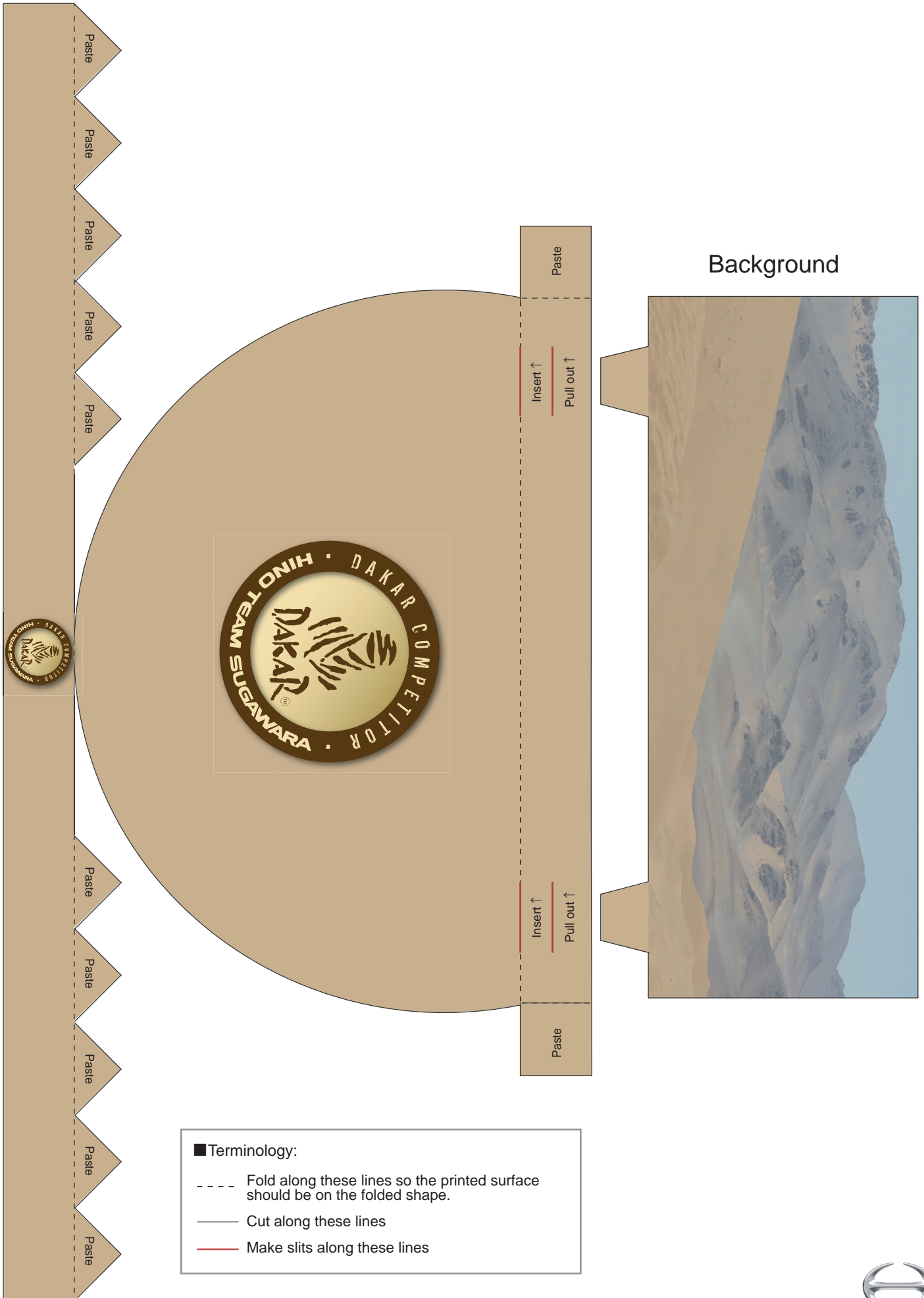
Front Wheel

Rear Wheel

Carp-shaped streamer



HINO TEAM SUGAWARA Dakar 2010 Paper Craft



■ Terminology:

- - - - Fold along these lines so the printed surface should be on the folded shape.
- Cut along these lines
- Make slits along these lines

HINO TEAM SUGAWARA Dakar 2010 Paper Craft

How to Assemble the Dakar Paper Truck



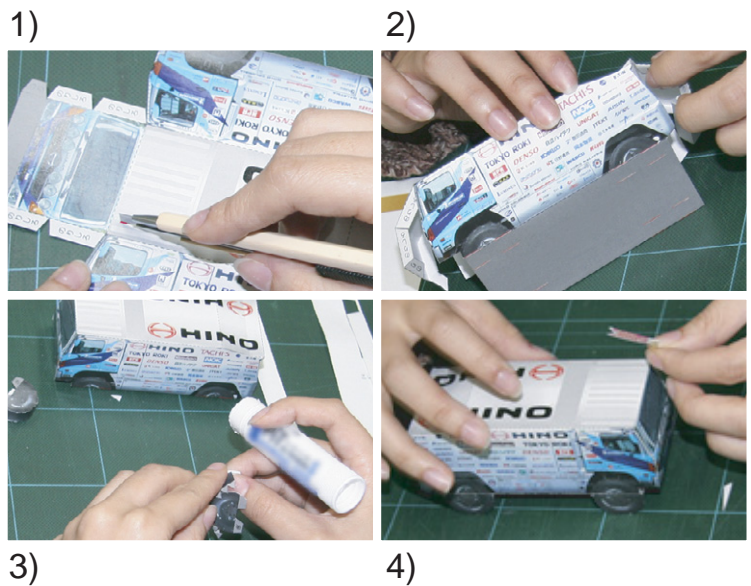
■ Required tools: Scissors, blade cutter, glue.

■ Precautions:

- Please take care when using cutting tools such as blade cutters.
- Please use glue and other adhesives only in well-ventilated areas.
- These Paper Craft parts are easier to work with when printed out on strong, thick paper (like postcard stock).

■ Assembly Directions:

- 1) Carefully cut out all the parts first. Make slits using a blade cutter, on the slit lines printed on the craft.
- 2) Fold along the dotted lines according to the instructions.
- 3) Assemble the truck based on the instructions for the part to paste.
- 4) Insert the tires and carp shaped streamer in the slits on the vehicle.
- 5) Assemble the pedestal and insert the background into the slits.
- 6) Complete the craft by placing the truck on the pedestal.



■ Terminology:

- Fold along these lines so the printed surface should be on the folded shape.
- Fold along these lines so that the printed surface should be on the inside of the folded shape.
- Cut along these lines
- Make slits along these lines



HINO TEAM SUGAWARA 2010 Calendar

ᄇᄇᄇ

ᄇᄇᄇ

ᄇᄇᄇ



2010 HINO TEAM SUGAWARA



4 April

S	M	T	W	T	F	S
				1	2	3
4	5	6	7	8	9	10
11	12	13	14	15	16	17
18	19	20	21	22	23	24
25	26	27	28	29	30	

5 May

S	M	T	W	T	F	S
						1
2	3	4	5	6	7	8
9	10	11	12	13	14	15
16	17	18	19	20	21	22
23	24	25	26	27	28	29
30	31					

6 June

S	M	T	W	T	F	S
			1	2	3	4
5	6	7	8	9	10	11
12	13	14	15	16	17	18
19	20	21	22	23	24	25
26	27	28	29	30		

7 July

S	M	T	W	T	F	S
						1
2	3	4	5	6	7	8
9	10	11	12	13	14	15
16	17	18	19	20	21	22
23	24	25	26	27	28	29
30	31					



2010 HINO TEAM SUGAWARA



8 August

S	M	T	W	T	F	S
						1
2	3	4	5	6	7	
8	9	10	11	12	13	14
15	16	17	18	19	20	21
22	23	24	25	26	27	28
29	30	31				

9 September

S	M	T	W	T	F	S
				1	2	3
4	5	6	7	8	9	10
11	12	13	14	15	16	17
18	19	20	21	22	23	24
25	26	27	28	29	30	

10 October

S	M	T	W	T	F	S
						1
2	3	4	5	6	7	8
9	10	11	12	13	14	15
16	17	18	19	20	21	22
23	24	25	26	27	28	29
30	31					

11 November

S	M	T	W	T	F	S
						1
2	3	4	5	6	7	8
9	10	11	12	13	14	15
16	17	18	19	20	21	22
23	24	25	26	27	28	29
30						



2010 HINO TEAM SUGAWARA



12 December

S	M	T	W	T	F	S
						1
2	3	4	5	6	7	8
9	10	11	12	13	14	15
16	17	18	19	20	21	22
23	24	25	26	27	28	29
30	31					

2011 1 January

S	M	T	W	T	F	S
						1
2	3	4	5	6	7	8
9	10	11	12	13	14	15
16	17	18	19	20	21	22
23	24	25	26	27	28	29
30	31					

2 February

S	M	T	W	T	F	S
						1
2	3	4	5	6	7	8
9	10	11	12	13	14	15
16	17	18	19	20	21	22
23	24	25	26	27	28	

3 March

S	M	T	W	T	F	S
						1
2	3	4	5	6	7	8
9	10	11	12	13	14	15
16	17	18	19	20	21	22
23	24	25	26	27	28	29
30	31					

